

EM Series

Energy Gateway

- Energy Meter and Data Logger
- Supports Modbus, Analog and Pulse Devices
- BACnet/IP Server available
- Pre-configured Enclosure
- Optional Cellular Modem

DESCRIPTION

The Senva Energy Gateway is a pre-assembled energy meter, data logger, and power supply. Connect to a LAN and push or pull data via HTTPS, XML or FTP, optional 4G LTE cellular modem expands ease of deployment. This plug-and-play solution supports the Senva EM-PULSE or EM-RS485 meter and Current/Voltage Transducer™ (CVTTM). Pre-configured with the Obvius AcquiLite A7810 or AcquiSuite A8810 Data Acquisition Server, the Energy Gateway will collect and log metering data. Additional analog devices can be connected using optional expansion modules. Flexible integration with BACnet/IP network allows logging of downstream Modbus devices to be available as BACnet points in automation systems.

APPLICATIONS

- Energy management and performance contracting
- Activity-based costing in commercial and industrial facilities
- Measurement and verification projects
- Software dashboards and kiosks
- Enterprise management applications
- Smart grid programs
- Load shedding

FEATURES

Modular and Configurable

- One solution for electrical, gas, BTU's, water as needed
- Connect and monitor up to 32 Senva energy meters, plus any analog signal or pulse output device

UL 508A Certified

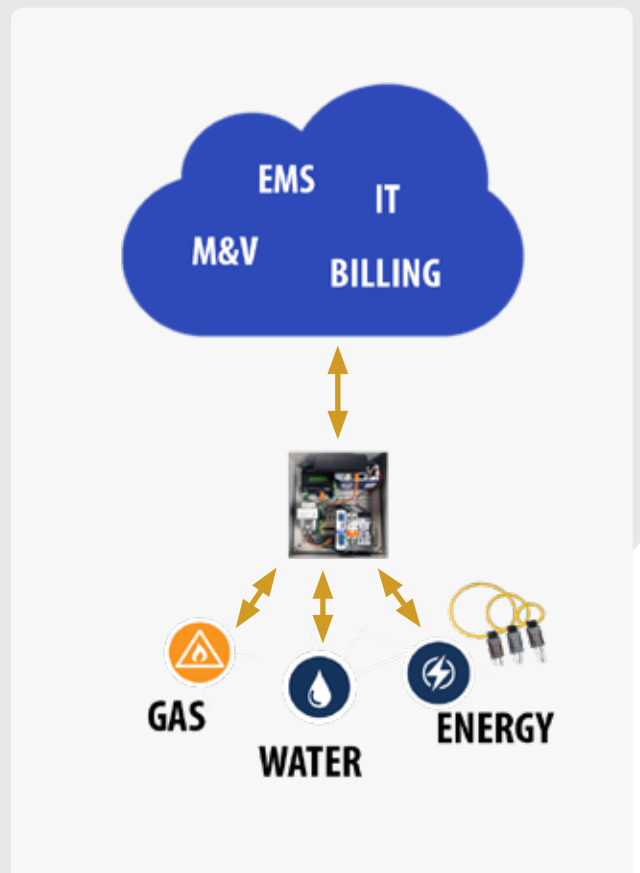
- Energy Gateways manufactured by Senva are UL508A certified which provides safety and confidence that all components used have been carefully selected to meet strict UL safety requirements

Multiple Communication Capable

- Upload to the cloud or send data to 4 different databases at once, or USB drive to upload on the device itself indefinitely
- Connect to any LAN or Wi-Fi with optional module or cellular modems for easy and quick deployment, all set-up is done at the factory to save on install time
- No software required, use any browser to edit or make changes using laptop or PC

Fast Installation

- Get fast results for your customers for measurement and verification projects, energy management, continuous commissioning and performance contracts



DATA ACQUISITION SUITES


AcquiLite A7810

- Flexible data acquisition server allowing users to collect energy data from up to 4 EM-PULSE meters or other pulse output meters (gas, water, etc.)
- Collects and logs data from connected devices based on user selected intervals
- Pre-configured with one or more EM-PULSE meters for quick startup


AcquiSuite A8810

- Flexible data acquisition server allowing users to collect energy data from EM-RS485 meters and environmental sensors
- RS-485 Modbus serial port supports up to 32 external devices (expandable)
- Pre-configured with one or more EM-RS485 meters for quick startup

EXPANSION MODULES


Flex I/O A8332

- Add additional devices beyond meters for a complete monitoring package
- 8x user selectable inputs - convert analog, resistive and pulse inputs to Modbus
- Incorporate with AcquiSuite A8810 to provide a cost-effective monitoring solution
- 2x output relays for demand control


HD Pulse A8911-23

- Collect data from up to 23 independent pulse inputs
- Convert pulse inputs to Modbus for use with the AcquiSuite A8810

CELLULAR MODEMS


CDMA, USB Kit

- Verizon/Sprint cellular modem, USB interface
- Pre-configured to AcquiLite A7810 or AcquiSuite A8810

GSM/3G, USB Kit

- AT&T/T-Mobile cellular modem, USB interface
- Pre-configured to AcquiLite A7810 or AcquiSuite A8810


LTE/4G Advanced Ethernet Based

- Verizon/Sprint cellular modem, 2-3 LAN ports, Modbus TCP
- Advanced networking, Optional Wi-Fi, VPN support, Firewall, Remote Access
- Pre-configured to AcquiLite A7810 or AcquiSuite A8810

LTE/4G Advanced Ethernet Based

- AT&T/T-Mobile cellular modem, 2-3 LAN ports, Modbus TCP
- Advanced networking, Optional Wi-Fi, VPN support, Firewall, Remote Access
- Pre-configured to AcquiLite A7810 or AcquiSuite A8810